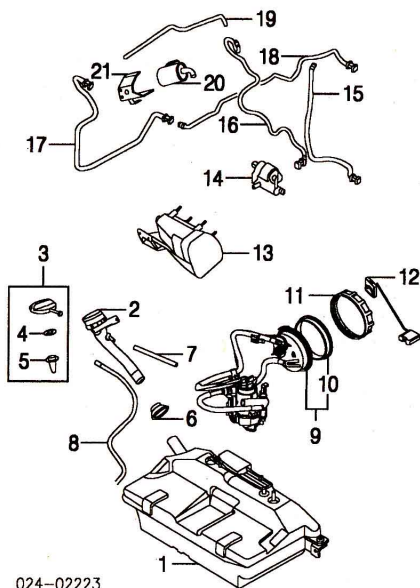


FUEL TANK Cont'd



024-02223

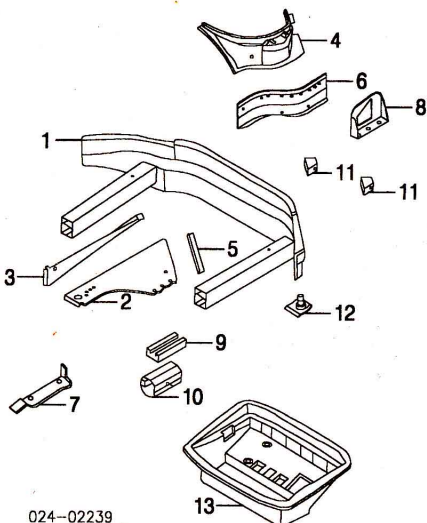
4 Seal, Fuel Cap	16 11 1 179 680	3.84
5 Pin, Fuel Cap	16 11 1 183 342	.25
*Included w/Fuel Cap Assy		
6 Collar, Filler Pipe	16 11 1 184 840	7.65
7 Hose, Fuel	13 53 7 788 347	26.25
*Cut to Fit		
8 Pipe, Outlet	16 11 1 184 886	15.50
9 Pump Assy, Fuel	16 11 6 753 452	m 1.2 288.00
10 Seal, Fuel Pump	16 11 1 184 084	18.00
*Included w/Fuel Pump Assy		
11 Cap, Screw	16 14 1 182 904	2.65
12 Sending Unit, Fuel	16 11 6 753 453	72.00
13 Canister, Carbon	16 13 1 184 580	149.00
14 Pump, Leak Diagnostic		
2000	16 13 6 756 440	79.50
2001		
To 9-01	16 13 6 756 440	79.50
From 9-01	16 13 6 752 551	79.50
2002-03	16 13 6 752 551	79.50
15 Pipe, Carbon Canister	16 13 1 184 578	35.00
16 Pipe, Dust Filter	16 13 1 184 581	46.50
17 Pipe, Front Vent	16 13 1 184 576	16.35
18 Pipe, Rear Vent	16 13 1 184 577	21.75
19 Pipe, Dust Filter	16 13 6 752 720	15.80
20 Filter, Dust	16 13 6 752 716	14.00
21 Bracket, Dust Filter	16 13 6 754 506	16.60

REAR BODY

Use Procedure Explanations 26 and 28 with the following text.

SHEET METAL

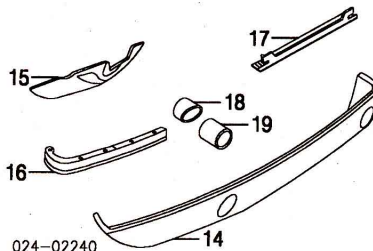
Refinish Rear Body Panel	1.5
Add for Edge & Inside	1.0
Refinish Valance Panel	1.2



024-02239

1 Panel, Rear Body	41 13 7 006 288	s #9.5 1635.00
*Add'l Parts &/or Dealer Contact Required		
#Includes R&R Luggage Compartment Floor Pan		

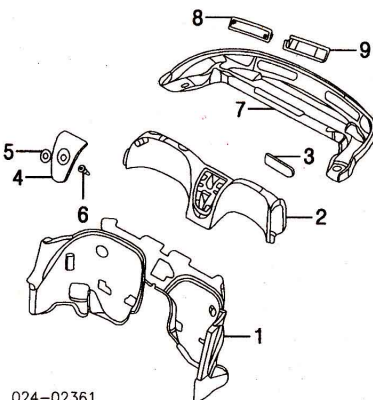
2 Floor, Luggage Compartment	R/L 41 12 7 006 214-3	2.5	84.75
3 Mount, Luggage Compartment Floor	R/L 41 11 7 006 314-3	1.5	89.50
4 Support, Lateral Body	R/L 41 13 7 006 226-5	3.0	113.00
5 Support, Luggage Compartment Floor	R/L 41 12 7 006 218-7		18.80
6 Sidemember	R/L 41 21 7 006 250-49	2.5	103.00
7 Bracket, Interior Silencer	R/L 41 21 7 006 278-7		14.10
8 Bracket, Exterior Silencer	R/L 41 12 7 006 216-5	1.0	40.75
9 Gusset, Upper Sidemember	R/L 41 11 7 001 444		38.25
10 Gusset, Lower Sidemember	R/L 41 11 7 001 445		32.90
11 Gusset, Body Panel			
Upper	R/L 41 34 7 001 446	40.25	
Lower	R/L 41 34 7 001 447	40.25	
12 Pin, Ground			
6mm	41 11 6 912 959	2.50	
8mm	41 11 6 912 960	2.50	
13 Pan, Luggage Compartment	51 71 8 234 133	1.5	540.00



024-02240

14 Panel, Valance (P)	51 12 8 258 711	.8	540.00
(P) Paint to Match			
15 Insulator, Valance Panel	R/L 51 48 8 234 234-3		97.25
16 Mount, Outer Valance Panel	R/L 51 12 8 234 806-5	#.1	37.00
17 Mount, Center Valance Panel	51 12 7 007 631	#.1	150.00
#w/Valance Panel Removed			
18 Mount, Extension-See Exhaust Section			
19 Extension, Chrome-See Exhaust Section			

INTERIOR TRIM

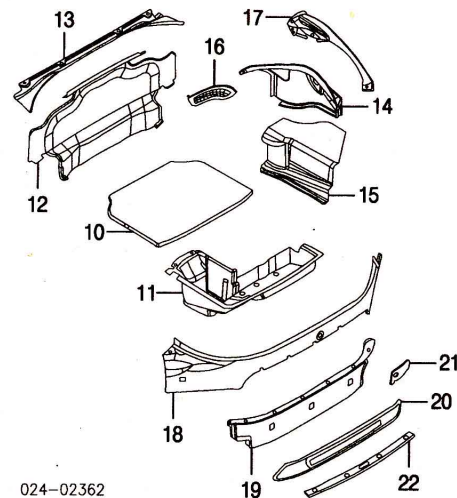


024-02361

1 Panel, Lwr Folding Top			
Black	51 47 8 266 765	.4	852.50
Crema	51 47 8 266 767	.4	852.50
Sport Red	51 47 8 266 766	.4	852.50
2 Panel, Roll Bar Trim			
Black	R/L 51 46 7 002 418-7	.4	925.00
Crema	R/L 51 46 7 002 422-1	.4	925.00
Sport Red	R/L 51 46 7 002 420-19	.4	925.00
3 Cover, Roll Bar Trim			
Black	R/L 51 46 7 002 480-79		123.00
Crema	R/L 51 46 7 002 484-3		123.00
Sport Red	R/L 51 46 7 002 482-1		123.00
4 Bezel, Roll Bar Trim			
Black	51 46 7 002 491	#.2	156.00
Silver	51 46 7 002 492	#.2	156.00
Stratus Gray	51 46 7 002 495	#.2	156.00
Blue Topaz	51 46 7 002 493	#.2	156.00
*Order by Application			
#Included in R&R Roll Bar Trim Panel			
5 Nameplate			
"Z8"	51 46 7 012 299	.2	70.50
6 Bracket, Nameplate	51 46 8 268 777		16.90
7 Panel, Upper Folding Top			
Black	51 47 8 247 664	.3	795.00
Crema	51 47 8 266 777	.3	795.00
Sport Red	51 47 8 266 776	.3	795.00
8 Cover, Folding Top Vent			
Black	R/L 51 47 8 269 794-3		91.00
Crema	R/L 51 47 8 269 798-7		91.00
Sport Red	R/L 51 47 8 269 796-5		91.00
9 Bracket, Vent Cover	R/L 51 47 8 268 902-1		33.00

Illustration Located in Next Column

10 Carpet, Luggage Floor			
Black	51 47 8 234 362	335.00	
Crema	51 47 8 266 998	335.00	



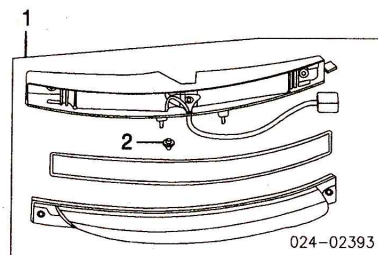
024-02362

	Sport Red	51 47 8 266 997		335.00
11	Compartment, Storage	51 47 7 001 953		135.00
12	Panel, Front Trim			
	Black	51 47 8 234 365	.4	335.00
	Crema	51 47 8 267 001	.4	335.00
	Sport Red	51 47 8 267 000	.4	278.00
13	Cover, Front Gutter	51 71 8 266 503	.2	47.75
14	Panel, Upper Side Trim]]			
	Black	R/L 51 47 8 234 364-3	.3	155.00
	Crema	R/L 51 47 8 266 996-5	.3	155.00
	Sport Red	R/L 51 47 8 266 994-3	.3	155.00
]]Order by Application			
15	Panel, Lower Side Trim			
	Black	R/L 51 47 8 244 976-5	.2	155.00
	Crema	R/L 51 47 8 266 984-3	.2	155.00
	Sport Red	R/L 51 47 8 266 982-1	.2	155.00
	Changer, CD	65 12 6 913 390	m .6	R425.00
	Magazine, CD	65 12 8 364 931		33.75
	Bracket, CD Changer	65 12 8 372 352		0.00
	Cover, CD Changer	65 12 8 372 311		11.00
16	Panel, Front Vent Louver			
	Black	R/L 51 47 8 247 666-5	.1	69.75
	Crema	R/L 51 47 8 267 282-1	.1	69.75
	Sport Red	R/L 51 47 8 267 280-79	.1	69.75
17	Cover, Side Gutter	R/L 51 71 8 266 506-5	.2	47.75
18	Panel, Upper Rear Trim			
	Black	51 47 8 266 539	#.3	210.00
	Crema	51 47 8 266 986	#.3	210.00
	Sport Red	51 47 8 266 985	#.3	175.00
19	Panel, Lower Rear Trim			
	Black	51 47 8 234 366	#.3	168.00
	Crema	51 47 8 266 989	#.3	168.00
	Sport Red	51 47 8 266 988	#.3	146.00
20	Panel, Rear Vent Louver			
	Black	51 47 8 239 483	#.3	140.00
	Crema	51 47 8 267 291	#.3	140.00
	Sport Red	51 47 8 267 290	#.3	140.00
	#R&R Complete			
21	Cover, Lamp			
	Black	R/L 51 47 8 241 090-89	.1	86.50
	Crema	R/L 51 47 8 267 288-7	.1	86.50
	Sport Red	R/L 51 47 8 267 286-5	.1	86.50
22	Panel, Lock	51 24 8 238 381	.1	31.00

REAR LAMPS

COMBINATION LAMP

R&I Combination Lamp	R/L	#.4
#w/Rear Bumper Removed		



024-02393

1 Lamp Assy, Combination	R/L 63 21 6 923 526-5	#.4	639.00
#w/Rear Bumper Removed			
2 Nut, Mounting (4/Side)	R/L 51 21 1 803 363		.80
#Included w/Combination Lamp Assy			

LICENSE LAMP

R&I License Lamp Assy	R/L	#.2
#w/Rear Bumper Removed, Included in R&R or O/H Rear Bumper		